



VICTORIAN COUNCIL ON THE AGEING

OLD PEOPLE'S WELFARE COUNCIL OF VICTORIA

ANNUAL REPORT

1963-1964

ORGANISATIONS REPRESENTED ON OLD PEOPLE'S WELFARE COUNCIL FOR YEAR 1963-1964

After Care Hospital.
Age & Invalid Pensioners Association (Club),
Ivanhoe.
Alexander Miller Memorial Homes.
Alfred Hospital.
Altona Elderly Citizens' Welfare Committee.
Apex Club of Melbourne.
Ararat Old People's Welfare Committee.
Ashburton & District Senior Citizens' Welfare
Committee.
Ashburton Elderly Citizens' Club.
Association for the Advancement of the Blind.
Australian Association of Social Workers (Vic.
Branch).
Australian College of General Practitioners (Victorian
Faculty).
Australian Medical Association (Vic. Branch).
Australian Red Cross Society (Victorian Division).
Bacchus Marsh Old People's Welfare Committee.
Ballarat & District Old People's Welfare Asscn.
Benalla & District Old People's Welfare C'ttee.
Bendigo & District Old People's Welfare Society.
Black Rock Elderly Citizens' Club.
Box Hill Elderly Citizens' Committee.
Brighton Elderly Citizens' Club.
Brotherhood of St. Laurence.
Business & Professional Men's Civic Association,
Footscray.
Business & Professional Women's Club of Mel-
bourne.
Donald Cameron Homes Committee (Presbyterian
Church of Victoria).
Camperdown Elderly Citizens' Club.
Canterbury Citizens' Welfare Committee.
Carlton Elderly Citizens' Club.
Carnegie-Murrumbidgee Elderly Citizens' Asscn.
Castlemaine & District Old People's Welfare C'ttee.
Catholic Church—Represented by St. Vincent de
Paul's Society.
Catholic Women's Social Guild.
Caulfield Elderly Citizens' Association.
Charlton Old People's Welfare Committee.
Chelsea Elderly Citizens' Club.
Cheltenham Elderly Citizens' Club.
Churches of Christ Department of Social Service.
Church of England Homes for Elderly People.
Citizens' Welfare Service of Victoria.
Cobram Elderly Citizens' Welfare Committee.
Coburg Elderly Citizens' Welfare Organisation.
Colac & District Elderly Citizens' Welfare Asscn.
Colac City Council.
Coleraine & District Old People's Welfare
Organisation.
Combined Pensioners' Association.
Country Women's Association of Victoria.
Croydon District Elderly Citizens' Welfare C'ttee.
Dimboola and District Elderly Citizens Club.
Dimboola & District Old People's Welfare C'ttee.

Drouin Senior Citizens' Club.
Dunolly Senior Citizens' Club.
Echuca Old People's Welfare C'ttee.
Essendon Old People's Welfare C'ttee.
Euroa & District Old People's Welfare C'ttee.
Evergreen Club, Balwyn.
Fairview Homes for the Aged, V.
Ferntree Gully Aged People's Home.
Fitzroy Elderly Citizens' Rest Home.
Footscray Senior Citizens' Welfare C'ttee.
Frankston Elderly People's Welfare C'ttee.
Frankston, Shire of.
Freemasons' Homes of Victoria.
Gladswood Home.
Hampton Elderly Citizens' Club.
Hawthorn Over-60 Club.
Healesville Old People's Welfare C'ttee.
City of Heidelberg Senior Citizens' Welfare C'ttee.
Hospitals and Charities Committee.
Jewish Social Service Council of Victoria.
Kanyana Club, Colac.
Kew Elder Citizens' Association.
Kilmore Senior Citizens' Welfare C'ttee.
Korumburra Old People's Welfare C'ttee.
League of Women Voters of Victoria.
Shire of Maffra Old People's Welfare C'ttee.
Malvern Elderly Citizens' Welfare C'ttee.
Maryborough Old People's Welfare C'ttee.
Medical Women's Society of Victoria.
Melbourne City Mission Inc.
Melbourne District Nursing Service.
Melbourne Jewish Philanthropic Society.
Montefiore Homes for the Aged.
Melbourne Junior Chamber of Commerce.
Melbourne Ladies' Benevolent Society.
Mental Hospitals Auxiliaries (C'ttee).
Mental Hygiene Authority.
Methodist Homes for Aged.
Mildura Senior Citizens' Welfare C'ttee.
Mitcham 60 and Over Club.
City of Moorabbin Elderly Citizens' Welfare Executive Committee.
Mount Royal (Special Hospital).
National Council of Women of Victoria.
Niddrie Elderly Citizens' Welfare C'ttee.
Noble Park Elderly Citizens' Welfare C'ttee.
North and West Melbourne Old People's Welfare C'ttee.
Northcote Pioneer Recreation Club.
Over Fifties Association of Victoria.
Port Fairy & District Old People's Welfare C'ttee.
Portland Old People's Welfare C'ttee.
Preston Elderly Citizens' & Truganina Welfare C'ttee.
Prince Henry's Hospital.
Pro-Bus Women's Housing Association.
K. G. Putt Elderly Citizens' Club.
Queen Elizabeth Home, Ballarat.

FRONT COVER PICTURE: At the Golden Years Exhibition of hobbies and crafts, Lady Delacombe with Mrs. Jensen, aged 92 years, from Rosebud.

THE PEOPLE'S WELFARE COUNCIL OF VICTORIA

OFFICE-BEARERS AND EXECUTIVE COMMITTEE - 1963-1964

Patrons:

His Excellency Major-General Sir ROHAN DELACOMBE,
K.C.M.G., K.B.E., C.B., D.S.O.
Lady DELACOMBE.

Hon. Treasurer:

Mr. G. P. N. WATT, C.M.G., C.B.E.

Hon. Secretary:

Mrs. W. H. DOBSON.

HIPPINDALL, C.B.E.

ORRIS, O.B.E., M.A.

JDDENHAM, M.A.

LSON, C.M.G.

tee: The Office-Bearers, with the following —

TKINSON, F.C.I.S., F.A.S.A.

il, 1964)

WER.

RAIG.

ST, C.B.E., M.C.E.

ODDERSEN.

EEIG.

COBS, E.D., J.P.

Miss E. JOHNSON.

Dr. E. LUCAS.

Mrs. A. R. MCGREGOR.

Mr. L. F. NORTH.

Mrs. C. KEYS SMITH.

Dr. P. M. TEWSLEY, M.B.E.

Mrs. B. B. THOMAS.

Miss B. YEOMAN.

M. WHITE, M.A.

AYLOR, O.B.E., M.A., LL.B.

H. IRVING, M.B.E.

Social Worker:

Miss S. RAMSAY, B.A., Dip.Soc.Stud.

Hon. Solicitor:

Lt.-Col. S. A. F. POND, O.B.E., E.D.

Hon. Auditors:

L. B. WALLACE & SON,
Chartered Accountants (Aust.)

HEADQUARTERS: 252 Swanston Street, Melbourne, C.1., Victoria.

Phone 32-3561.

ious page)

Citizens' Club.

sary & Outpatients' Clinic.

Elderly Citizens' Club.

elbourne.

Hospital.

College of Nursing.

(Victorian Branch). (Family

u).

ns' Welfare Committee.

erly Citizens' Association.

Citizens' Welfare Committee.

spensary & Welfare Centre.

re of the Aged & Incapacitated

(Quakers).

of Melbourne.

City Council.

artment.

Old People's Welfare Committee.

ople's Welfare Committee.

t Aged People's Homes,

Swan Hill & District Senior Citizens' Welfare
Committee.

St. Kilda Welfare Organisation.

Terang & District Old People's Welfare C'ttee.

Traralgon & District Elderly Citizens' Committee.

Victorian Congregational Women's Fellowship.

Victorian Council for Mental Hygiene.

Villa Maria Society for the Blind.

Wangaratta Old People's Welfare Committee.

Warracknabeal Elderly Citizens' Welfare C'ttee.

Warrnambool & District Old People's Welfare
Committee.

War Widows' & Widowed Mothers' Association.

War Widows Guild.

Wattle Elderly Citizens' Club, Ferntree Gully.

Williamstown Elderly Citizens' Welfare Committee.

N. G. Wishart Elderly Citizens' Club, Moorabbin.

Yallourn & District Old People's Welfare C'ttee.

Yarram Old People's Welfare Committee.

Yarrowonga Old People's Welfare Committee.

Y.W.C.A. (Southern Region).

OLD PEOPLES' WELFARE COUNCIL OF VICTORIA

THIRTEENTH ANNUAL REPORT

For Year Ended 30th June, 1964

THE Council is very appreciative of the inspiring lead given by its Patron, Excellency Major-General Sir Rohan Delacombe, and Lady Delacombe, and the personal and practical interest in the welfare of the elderly throughout the year. The Council arranged a visit by His Excellency the Governor and Lady Delacombe to elderly citizens' clubs in Malvern and South Melbourne, and was very appreciative of Lady Delacombe's gracious acceptance of its invitation to open the Golden Years Exhibition of Crafts and Hobbies at the Malvern Town Hall.

The Victorian State Government has continued its practical support of the work of the Council by including in its budget a grant of £1,000. By its investigation of the situation regarding private hospitals and rest homes for the elderly in a metropolitan suburban area, its plans for the provision of low rental accommodation for elderly women and in other ways, the Government has indicated its acceptance of further responsibilities in this sphere of community welfare. The Old People's Welfare Council, in its capacity as a co-ordinating body, welcomes every opportunity to co-operate with State Government Departments and instrumentalities, and believes that it has a valuable function to carry out in this respect.

Many municipalities throughout the State have continued to evince a practical interest in the welfare of the elderly citizens in their communities, and the Council has been glad to co-operate with them in a variety of ways. It was happy to arrange visits by the Lady Mayoress of Melbourne, Mrs. Leo Curtis, to Homes for elderly residents at East Brighton and Princes Hill.

The Old People's Welfare Council is representative of 142 bodies engaged in the promotion of the welfare of the elderly in their various spheres, and it is largely through these member organisations that the Council can achieve one of its main objectives, which is to create an increasing

awareness of the opportunities for meeting the needs of greater numbers of those who are reaching the advanced stages of life. The Council has, through its various committees and advisory committees, listed the services of many voluntary and willing workers from amongst its members, and pays a tribute to the able services they are rendering.

The work of the Council is made more effective by the valuable co-operation and interest of other bodies. An example of this is provided by the maintenance of the Adult Education Association, which, with the Old People's Welfare Council, is holding two one-day seminars on the subject of preparation for ageing. The fare of the Elderly Committee, which is the Rotary Club of Melbourne, to maintain close liaison with the Council and was responsible for the contribution to the Rotary Club of Melbourne of an amount of £1,000 available to augment the Council's Likelihood Staff Auxiliary, in addition to the generous provision of a travelling allowance for a social worker, a substantial amount to the Council to assist in providing transport for staff while on duty. The Council has also these and other manifestations of a growing interest in the work of the Council.

Two meetings of the Council were held during the year made possible by morning discussion sessions.

afternoon Council meetings. The Council has given all those who have the opportunity to take part in the work of the Council's work.

The presence of Miss Marjorie Myer, Vice Secretary of the National Welfare Council of U.K., was of major importance not only to the Council but to all interested in the welfare of the elderly. The assistance of the British Council, and Miss Bucke's return fare together with generous donations from the Sunshine Foundation and the Myer, the National Old People's Council of Australia, and a Commonwealth-wide itinerary were all appreciated. The Council would like to express its deep appreciation of the manner in which Miss Myer carried out a heavy programme. It was manifestly impossible to accept the invitations which were extended to her engagements that were during her visit enabled a number of interested people to meet and exchange ideas with, this time.

The development and expansion of the work in many directions have necessitated a revision of its constitution and a sub-committee was appointed for the year to study the Council's work to make suggestions as to amendments.

The working work of the Council has been carried out without adequate staff, and efforts have been made throughout the year to keep in touch with many of its friends and supporters, and to extend their gratitude. Their gratitude is expressed to those who responded so generously to the Council for assistance.

The planning, as well as the work of the Council, is dependent on the loyal services of the Council's staff, professional and office staff, of whom the Council expresses its appreciation.

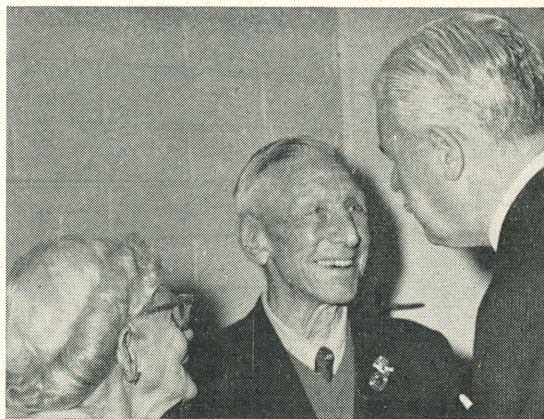
G. T. CHIPPINDALL,
Chairman.

COUNCIL MEETINGS

FOUR well-attended Council Meetings were held during the year. At the Twelfth Annual Meeting of the Council, which took place on August 21st, 1963, the Guest Speaker was Dr. H. C. Coombs, Governor, Reserve Bank of Australia, and Pro-Chancellor of Australian National University. His outstanding address "Preparation for Retirement" was printed and was widely circulated not only in Australia but also in several other countries.

On December 5th, 1963, the Council Meeting heard an informative address from a member of its staff, Miss Shirley Ramsay, who had just returned from a four months' overseas study tour, and who had much of interest to relate.

The two Council Meetings held on March 19th and June 25th were devoted in the mornings to informal discussion on topics submitted by members, and in the afternoons to formal business, while the luncheon interval on both occasions afforded opportunities for friendly conversation. Miss E. Bulcraig and her group of helpers kindly provided the luncheon, for which only a small token charge was made. Many Council members voiced the opinion that these two all-day meetings were both useful and enjoyable.



His Excellency the Governor, Sir Rohan Delacombe, chats with Mr. and Mrs. Maurice Grant outside their housing unit on the occasion of his visit to the elderly citizens' village in Footscray, built by the Footscray Lions Club.

(Photo. courtesy "The Age")

INFORMATION AND ADVISORY SERVICE

Through its Information and Advisory Service, which was established in November 1962, the Council continues to receive numerous enquiries about existing services and facilities for the elderly, both from older people themselves, and from relatives, friends, social workers and other interested people enquiring on their behalf.

Many of these people have expressed difficulty in finding out what facilities exist to meet their particular needs, thus giving an indication of the importance of readily-available sources of information, together with staff to help people use this information effectively.

Their enquiries are, in turn, an important indication to the Council of those areas of need amongst older people which are being met least effectively at present.

Of a total of more than 800 enquiries throughout the last twelve months, 47% have concerned some kind of accommodation problem. These have included numbers of requests for information about "contributory" housing schemes, from people who are finding their own homes and gardens too large to manage comfortably and who are able to sell them and make the required initial donation to the sponsoring organisation.

Other older people requiring the same kind of "independent living" accommodation, but whose limited means prevents them from making such a donation, are faced with very long waiting lists for the comparatively few self-contained housing units available at a low weekly rental only.

Long waiting lists continue to be a feature of both hostel and infirmary accommodation, with private guest houses and hospitals being the only solution for many elderly people—if they, or their relatives, can afford to pay for it.

An increasing demand for information about nursing-care accommodation has emphasized the need for the Information and Advisory Service to have on hand more information about registered private nursing homes. The Council is very grate-

ful indeed to those members of the Women's Study Group who volunteered to visit a number of existing homes for this purpose, and many nursing homes which have been most co-operative and helpful in this respect.

The lack of appropriate accommodation for the mildly "confused" but active person who does not fit into any of the existing categories of care, and the physically fit person who is not well enough for hospital care but not sick enough for a hospital, are serious problems also.

An allied problem is the increasing heavy demand for companies to live with an elderly person and the need for institutional care. The apparent scarcity of suitable people interested in acting as companions emphasizes the need for better and more domiciliary services in many areas for more day-care and temporary facilities, particularly to help people in need of help.

Enquiries about pensioning, particularly from people who are unable to approach a government department directly, about employment opportunities for voluntary work, and facilities and financial help for obtaining surgical aids and appliances have also been numerous.

Numbers of enquiries have also been received about "multiple" ones where information is requested about several different types of services for the elderly. Other enquiries presented complex problem situations requiring personal counselling as well as information about essential services.

As it is not within the scope of the Information and Advisory Service to take extensive personal counselling, the Council has been able to give practical help over long periods. The Council is most grateful to the social workers and other agencies in our community who have accepted referrals when necessary. This has been required.

ELDERLY CITIZENS' CLUBS

ved from 143 elderly citi-
y in 1964 showed a mem-
0; with the formation since
s this figure is over 20,000,
ver-60 population of Vic-
however, are not the real
worth in the community;
re, through conferences,
espondence is the Council
al climate of activity which
majority of the 143 clubs in

year new buildings have
at Blackburn, Box Hill,
itcham, Mordialloc, Ring-
n, Morwell and Numurkah,
at Altona and Camberwell
siderably enlarged.

l Conferences were held
at Ballarat, Benalla, Haw-
on and Ringwood. Office-
mittee members attended
Benalla, Blackburn, Blair-
ills (Upwey), Boronia, Box
d, Castlemaine, Chelsea,
Coolibah (Fitzroy), Corio
ydon, Dromana, East Beau-
Euroa, Frankston, Hastings,
dinia (Geelong), Kew, Kil-
enty, Maryborough, Morn-
Evelyn, Newtown-Chilwell
le Park, Numurkah, Rain-

bow (Balwyn), Ringwood, Ringwood East,
Rosebud, Rye, Senior Citizens (South
Yarra), Seymour, Shepparton, Sorrento,
South Melbourne, Stawell, Wangaratta,
Warrandyte, Wattle (Ferntree Gully),
Yarrawonga.

It will be noted that two of the con-
ferences were held in the country and one
at Frankston for clubs on the Mornington
Peninsula. This extension of the con-
ference programme was made possible
only by the practical help which was re-
ceived from group leaders and demon-
strators in the places concerned. To them
and to those others who have helped with
the conferences our sincere appreciation
is extended.

All the conferences have been held in
elderly citizens' clubs and we wish to ex-
press our gratitude for the generous and
helpful way in which they have co-
operated in this activity.

Visits to the number of 104 were made
by the Clubs Consultant; on a number of
these she attended, as observer, meetings
of club committees. This was a most
interesting and helpful experience and
showed how sincerely and capably office-
bearers and committee members are
accepting and carrying out their responsi-
bility to their club and its members.



Numurkah Senior Citizens' Club, which was officially opened by His Excellency the Governor,
Sir Rohan Delacombe, on 10th October, 1963.

MISS MARJORIE BUCKE'S VISIT



Miss M. Bucke

The visit to Australia of Miss Marjorie Bucke, Executive Secretary of the Old People's Welfare Council of the United Kingdom, was made possible by the Old People's Welfare Council, which generously donated the expenses of the trip from London to Melbourne and return.

During eight weeks, commencing on 1st October, Miss Bucke visited the capital cities of the United States and saw something of the work being done for elderly people by the various State and Local Welfare Councils. She also attended, in Melbourne, the inauguration of the Australian Association of Old People's Welfare Councils.

More importantly still, Miss Bucke met with the office-bearers, Committee members and staff of the State Councils and shared with them her own knowledge of and experience in work with elderly people.

Just before leaving on her return to the United Kingdom, Miss Bucke attended in Sydney the two-day conference of the National Old People's Welfare Council of Australia, the body under whose auspices her visit was planned.

ACCOMMODATION FOR THE FRAIL ELDERLY

Following on the investigations made by the Old People's Welfare Council as to the accommodation provided for elderly people throughout Victoria, which resulted in the publication of "Accommodation for the Elderly in Victoria" and "Low Income Pensioners and Frail Elderly in Relation to the Aged Persons Homes Act", the Executive Committee of the Council set up an Infirmary Accommodation Advisory Committee to study this aspect of accommodation still further.

Discussions have taken place with a number of representatives of Church and other organisations which have received subsidies under the Aged Persons Homes Act for the provision of accommodation for elderly people. The Council is deeply appreciative of the co-operation of these people, who were able to submit details of the difficulties and problems met with in

the day to day operations of the Council in endeavouring to provide accommodation required by residents who are increasingly frail.

As an outcome of these investigations carried out by the Executive Committee, it has in course of time made a detailed submission as to the provisions and administration of the Aged Persons Homes Act might be made as to meet some of the difficulties being experienced.

When this has been considered by the Executive Committee, a statement will be sent to the National Old People's Welfare Council of Australia for consideration of similar statements to be sent to the other States in this connection. It is the view to appropriate representation to be made to the Government.

YEARS EXHIBITION

exhibition of crafts and
e organised by the Old
re Council was held in the
n, Malvern Town Hall, on
h May, 1964.

e sent by 57 clubs (24 coun-
etropolitan) and 19 Homes,
organisations.

ion was opened by Lady
o later made a comprehen-
e exhibits and met a num-
ple who had helped.

d and variety of the work
standing and it was all most
the visitors, some of whom
umbled by seeing what older
eads can do, while others
h many ideas for themselves
bs. We were delighted to
y country visitors, together
from Greenvale Village for
ndigo Home for the Aged,
eth Home, Ballarat, and
the Repatriation General

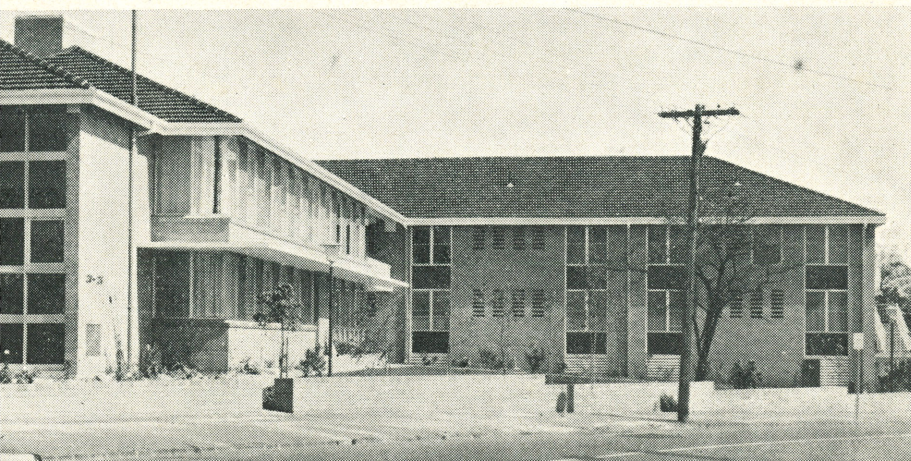
express our sincere gratitude
Tewsley, Chairman, Mrs. B.
Sec., and the members of
e who, over a period of many
o much thought and energy
nisation of what everyone
a successful exhibition.

PREPARATION FOR RETIREMENT

The Council is continuing its active co-
operation with other bodies interested in
the matter of "Preparation for Retirement".
Probably the most significant out-
come of such co-operation, during the
period under review, was the seminar held
on a Saturday in June, 1964. Joint spon-
sors were the Adult Education Association
and the Council. Under the title "View
from the Fifties", approximately 80 regis-
trants heard three distinguished speakers
discuss this matter from as many angles.
One of the Council's staff is participating
in a 10-weeks' lecture programme on
"Preparation for Retirement" organised by
the Council of Adult Education, which
commenced in June, 1964.

WOMEN'S STUDY GROUP

This group, now almost four years old,
is beginning to be of very considerable
help to the Council. Some of its members,
all of whom are now well-informed on the
needs and problems of elderly people are,
under staff guidance, visiting certain
institutions in the city and suburbs and
are providing material of great use in the
operation of the Council's Information
and Advisory Service. In the course of
their visiting, members are developing
their appreciation of the need for greatly
increased services for the community's
older people.



Moorfields', Manningtree Road, Hawthorn, providing eighty-one individual flatette units on
a contributory basis for elderly residents.

EXECUTIVE COMMITTEE MEETINGS

During the current year the Executive Committee decided, as an experiment, to meet only every two months. At the same time, the following sub-committees and advisory committees initiated, or continued, their special work, and instituted a system of regular reporting thereon to the Executive Committee:—

Clubs Advisory Committee
Constitution Sub-Committee
Co-options Sub-Committee
Dental Care Advisory Committee
Executive Sub-Committee
Employment of the Elderly Advisory Committee
Finance Sub-Committee
Infirmary Accommodation Advisory Committee
Old People's Welfare Committees' Advisory Committee
Public Relations Advisory Committee.

It has been found that, by this means, more intensive study is being given to certain important topics of concern to the Council and, at the same time, routine business is more effectively carried through by the Executive Committee.

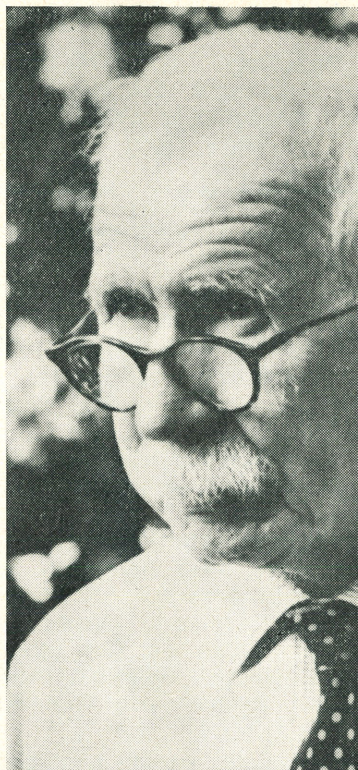
OVERSEAS STUDY TOUR

Miss Shirley Ramsay, social worker with the Council, who was awarded the Traveling Scholarship donated last year by Georges' Staff Auxiliary, returned in December from a four months' study tour.

During this period Miss Ramsay attended the Sixth International Congress of Gerontology, held in Copenhagen, and later spent some time in England and the United States of America studying aspects of the care of the elderly.

Copies of her report on her study tour are available on loan from the Council's Library.

During Miss Ramsay's absence overseas, the Council was fortunate in having the services of Mrs. Prudence Brown, B.A., Dip. Soc. Stud., who undertook responsibility for the Information and Advisory Service.



The whole community owes much to R. Murdoch, who will be 90 in September. His contributions in the fields of education and social work have been extended over many years. The Old People's Council is happy to add its tribute of appreciation to this helpful philosopher.

(Photo. by ...)

DONATION FROM STAFF AUXILIARY

Following on from their donation in 1963 of a Traveling Scholarship and the overseas study tour taken by Miss Ramsay, the Georges' Staff Auxiliary made a further donation of £500 for the Council of £500 for the follow-up project to the study tour.

After consultation with the Georges' Staff Auxiliary it was agreed that the money would be used for the purchase of a car for the extension of the Council's services to country areas.

The Council is very grateful to the Georges' Staff Auxiliary for this further generous donation.

COMMUNITY EFFORT

Committees Formed

de a means by which local
roughout Victoria can at-
some of the needs and
e elderly, the Council has
etting up of more than 60
Welfare Committees" which
ative of municipalities,
community service organisa-
bodies and leading citi-

tees are encouraged to re-
sitution and to undertake
undertaking of measures to
n services for the elderly
und to exist.

ar under review, the Coun-
o invitations to assist in
e following nine com-

or Citizens' Welfare Committee
lderly Citizens' Welfare C'ttee.
ict Elderly Citizens' Welfare

tings Senior Citizens' Welfare

lberg Senior Citizens' Welfare

y Citizens' Welfare Committee
wood Elderly Citizens' Welfare

or Citizens' Welfare Committee
rribee Old People's Welfare

of concern to the Council
mittees which, following
in past years, successfully
ne project, may not have
original enthusiasm. This
iving the attention of a
nittee, with a view to co-
activities of these commit-
sting ways in which their
an be made most effective
of the elderly.

STATE COUNCIL

t was going to press, it was
the Old People's Welfare
mania had been formed.
Council extends a cordial
od wishes to this new body.

"GOLDEN YEARS"

The quarterly newsletter "Golden Years" continues to be a useful medium for the practical interpretation of the Council's policy and programme. Its circulation of about 4,750 copies four times each year is continually being extended both within Australia and abroad. In the latter case, useful material is often received in exchange.

COUNCIL LIBRARY

The Council is indebted to the Rotary Club of Melbourne, through its Welfare of the Elderly Committee, for a generous gift of £100 to be used in acquiring more library material relating to varied aspects of the needs and problems of elderly people. The Council continues to be grateful for the voluntary help given by Mrs. Herta Crohn, a professionally trained and experienced librarian who has, to date, catalogued over 500 titles, which include books, pamphlets, leaflets, brochures and the like.



One of Victoria's centenarians. Mrs. Minnie Greig, of Sunshine, maintains a lifelong interest in gardening.

(Photo. courtesy "The Age")

FINANCE

The brief outline of some of the Council's activities which is incorporated in this Annual Report conveys some indication of the continual expansion required in order to meet the demands which are made on the Old People's Welfare Council to help promote the welfare of the elderly throughout the State.

This expansion, in turn, has necessitated increased expenditure and the fact that, in the year under review, almost three-fourths of the cost of operation has been met from contributions received during the year is an indication of the sustained response arising from a widespread recognition of the value and importance of our work in this sphere of community service.

From year to year it is most encouraging to see so many of the same donors — government, municipal, trusts, business firms and individuals — making their contributions, large and small, to our funds, and also to welcome numbers of new supporters. We are happy to give effect, where possible, to the special wishes of those donors who desire to have their con-

tributions applied to some pose. Illustrations of the year's records are the app gift of £500 from Georges' to the purchase of a motor portation of the Council's duty and the use of £100 Rotary Club of Melbourne mentation of the Council's

Gratitude is expressed to given so generously, with the future, the Council's fr porters will continue to need for adequate finance to expand what has already be and to enable the Coun appeals for assistance in o Some of the plans for the c already formulated, and th tation is dependent on such

The Financial Statement of Assets and Liabilities, w adopted by your Executive d duly audited, are presented

DONATIONS

£1,423.74 — Herald & Weekly Times. ("Wealth Words").
 £1,000.00 each — Government of Victoria, Edward A. Green Charitable Foundation.
 £500.00 each — William Angliss (Vic.) Charitable Fund, Georges Staff Auxiliary.
 £400.00 — Estate of Patrick Brennan.
 £300.00 — T. & F. Williams Charitable Trust, (£150—1963, £150—1964).
 £250.00 — Victorian Chamber of Manufactures.
 £225.00 — Alfred Edments Trust (£100—1963, £125—1964).
 £200.00 — Estate late Edward Wilson (£100—1963, £100—1964).
 £100.00 each — J. R. Hartley Estate (£50—1963, £50—1964), Mr. G. S. Colman, Miss C. I. Black, Mobil Oil Aust. Ltd., C. F. W. Taylor Public Charitable Trust, International Harvester Co. Pty. Ltd., Mr. T. C. Lothian, Ford Motor Co. of Aust. Ltd., Australia and New Zealand Bank Ltd., Austral Standard Cables Pty. Ltd., Oliver J. Nilsen (Aust.) Ltd., Percy Baxter Charitable Trust, Estate A. M. White, Rotary Club of Melbourne, Melbourne City Council, Estate late Geo. Adams.
 £75.00 — H. G. Turner Samaritan Fund (£50—1963, £25—1964).
 £70.00 — Prestige Ltd. (£50—1963, £20—1964).
 £69.19.3 — Sir Giles Chippindall.
 £50.00 each — A.M.P. Staff Charity Fund, Green McCandlish Ltd., Australian Estates Co. Ltd., Olympic Tyre & Rubber Co. Pty. Ltd., T. J. Sumner Trust Charitable

Fund, R. Collie & Co. Pty. Ltd. Co. Pty. Ltd., Chamber of M Ltd., North Broken Hill Ltd Stevedoring & General Contr General Motors-Holdens Pty. L wick, Business Equipment Pty. ings Ltd., Anonymous.

£44.8.5 — Australian Controls Ltd. Emp

£26.5.0 — Mr. R. J. McArthur.

£25.0.0 each — Mr. A. H. L. Gibson, Wales, A. V. Jennings Indust Ian Beaurepaire, Julius Marlow Ltd., Mr. N. O'Donohue, An Pty. Ltd., Taylor Ferguson & C United Breweries Ltd., Royal I trolytic Zinc Co. of A/asia, Ltd. M. Donaghy & Son Pty. Ltd. Rootes (Aust.) Ltd., The Joh Fund, H. J. Heinz Co. Pty. Ltd. J. Brown, Capt. F. L. Grose Aust Ltd., Williams the Shoem Bros. Pty. Ltd., J. H. Wilkins son's Federal Spring Works Consolidated Industries Ltd., R Diarmid & Sons, Ampol Petro Ansell Rubber Co. Pty. Ltd.,

£21.0.0 — McIlwraith, McEacharn Ltd.

£20.0.0 each — Mr. H. M. Kilpatrick, Ltd., T. H. & W. J. King, A Kimpton, Broken Hill South

(Cont

OLD PEOPLE'S WELFARE COUNCIL

FINANCIAL STATEMENT FOR YEAR ENDED 30th JUNE, 1964

RECEIPTS		PAYMENTS	
TO CAPITAL EXPENDITURE			
Cash 1/7/63	£2,628	Office Equipment	£264
	11,306	Motor Vehicle	556
	506		
	80		
	<u>14,520</u>	Salaries	£820
		Superannuation	19,270
		Printing & Stationery	1,092
		Rent, Lighting	965
		Postages, Telephone	1,563
		Travelling Expenses	524
		Overseas Travelling Expenses	142
		Car Operation	1,426
		General Expenses	142
			491
			<u>16,435</u>
		Cash at Bankers	3,085
			<u>£19,520</u>
	<u>£19,520</u>		

STATEMENT OF ASSETS AND LIABILITIES AS AT 30th JUNE, 1964

Funds 1/7/63	£18,685	FIXTURES AND FITTINGS	
Expenditure and		At Cost Less Depreciation	£19
Net Income	4,065	OFFICE FURNITURE AND MACHINES	
		At Cost Less Depreciation	299
Funds 30/6/64	14,620	MOTOR VEHICLES	
		At Cost Less Depreciation	1,217
		Deposits at Bankers	10,000
		Cash at Bankers	3,085
	<u>£14,620</u>		<u>£14,620</u>

AUDITORS' REPORT

We have audited the books and Accounts of the Old People's Welfare Council for the year ended 30th June, 1964, and that we have obtained all the information and explanations we have required. In our opinion the accompanying Statement of Assets and Liabilities and Financial Statement are properly drawn up and exhibit a true and fair view of the Council's affairs according to the information and the explanations given to us and as shown by the Books of the Council.

Dated at Melbourne this 27th day of July, 1964.

L. B. WALLACE & SON
Chartered Accountants,
Auditors.

(Previous page)

E. C. Dyason Charitable Trust, City of
British United Shoe Machinery Co. of
Ltd., Young's Transport Agency,
Mr. F. R. Morgan.

Insurance Co. Ltd.

Miners Ltd., J. B. Were & Son.

Clemenger Pty. Ltd., Mr. Harvie J.
J. V. Chard, Mr. Malcolm Moore, "The
on Brick Holdings Ltd., Commercial Bank-

ing of Sydney Ltd., S.D.A. & V. Wynn, Paton Adver-
tising Service Pty. Ltd., Kodak (A/asia.) Pty. Ltd.,
Scottish Insurance Corporation Ltd., Aldwych Adver-
tising Pty. Ltd., Mr. R. J. H. Risson, Richard Allen
& Sons 1919 Pty. Ltd., Mr. E. G. Redwood, Mr. L.
Glenn, Mr. & Mrs. M. G. Rodd, Commercial Bank
of Aust. Ltd., Broons Containers Pty. Ltd., L. A. Wade
Pty. Ltd., Wilkie & Co. Ltd., Automotive & General
Industries Ltd., Dr. F. G. Tuddenham.

£10.0.0 each — Mica & Insulating Supplies Co. Pty. Ltd.,
W. D. Joynt & Co. Pty. Ltd., Mr. J. McIlwraith

(Continued on next page)

Smith, Mrs. G. C. Hawker, Miss B. Brash, Moran & Cato Pty. Ltd., Fred J. Cato Charitable Fund, Mr. E. T. Cato, "Laurie Richards", Mr. J. Robinson, Hugh Anderson Pty. Ltd., Mr. E. J. G. Wilson, Mr. R. N. Peachey, Mr. E. F. Robertson, Mr. Rutter Clarke, Mrs. M. A. Lucas, H. Halford Pty. Ltd., Commonwealth Banking Corporation, Miss L. M. Henderson, J. R. G. and E. McKenzie, Presbyterian Ladies' College—Social Work Funds, Brown Gouge Ltd., Mt. Lyell Mining & Railway Co. Ltd., Compressed Cork Sheet Pty. Ltd., Mentone Girls' High School, Mr. G. W. Edgar, Mr. V. G. Harrison, Mr. Geo. Forman, Dr. P. W. Sutherland, Dr. L. J. Mitchell, Mr. G. F. Turnley, Dr. Yvonne Russell, Chesebrough-Ponds Int'l. Ltd., Mr. N. Robertson, Dr. Barbara Wood, Anonymous, H. Hanna & Co. Pty. Ltd., Mr. N. Robertson, Dr. Barbara Wood, Anonymous, H. Hanna & Co. Pty. Ltd., Ascom Pty. Ltd., Mercantile Mutual Insurance Co. Ltd., Mr. N. O'Heare, Conzinc Riotinto of Aust. Ltd., Rosebud High School, Bourke Appliances Pty. Ltd., Brash's Pty. Ltd., Mr. R. N. Lemon, Australian Carbon Black Pty. Ltd., Anonymous, Miss Lydia Eady, Mr. Edgar Rouse.

£6.0.0 — A.P.M. (Head Office) Staff Charities Fund.

£5.5.0 each — Legal & General Assurance Society Ltd., Russell Burrows Pty. Ltd., West Footscray Engineering Works Pty. Ltd., John Holland & Co. Pty. Ltd., National Bank of A/asia Ltd., Mr. G. D. Brown, Miss Ellison Harvie, Geo. M. Hume Pty. Ltd., C. H. Lucas Advertising, Mr. J. Briggs, C.I.G. (Vic.) Pty. Ltd., Geo. Wardrop Ltd., Mr. S. Morgan, H. C. Sleight Ltd., A. C. Goode & Co., Mr. T. M. Ramsay, Telford Smith Pty. Ltd. P. & O. Orient Line of Aust. Ltd., Smith Mitchell & Co. Ltd., Mr. C. G. Landy, Robert Hutchinson Ltd., Geo. Kinnear & Sons Pty. Ltd., H. B. Dickie Ltd., Mr. R. T. Hawkins, Mr. W. V. Morgan, Dr. A. Weigall, Mr. J. K. Little, Dr. Felicity Campbell, Dr. Leslie Williams, Johnson Barson & Co., Jackson & Jackson, Mrs. S. Anderson, W. Angliss & Co. (Aust.) Pty. Ltd., Coles Stores, Dr. J. Egan, Hayes Publicity Service Pty. Ltd., Laxettes Pty. Ltd., Sir Archie Michaelis, Mitsui & Co. (Aust.) Pty. Ltd., Dr. H. E. Robinson, Mr. A. N. Curphey, E. L. Heymans & Co. Pty. Ltd., Eta Foods Pty. Ltd., Mr. R. S. Prentice, Dr. Dulcie G. Rayment, F. G. Strang Pty. Ltd., Wm. Houghton & Co. Ltd., Lustre Jewellery Ltd., Mr. A. S. H. Gifford, Mr. T. W. D. Stevens, G. Rechemmann, Mr. T. E. King, Richardson-Cox Pty. Ltd., Hardware Co. of Aust. Pty. Ltd., Metropolitan Dairies Holdings Ltd., Dr. Vernon Davies, Mr. D. Tomkin, W. E. Bassett & Partners, Mr. G. F. Barson, Belleland Boxes & Associates Pty. Ltd., Australasian Advertising Co. Ltd., Bendix Consolidated Industries Ltd.

£5.0.0 each — Joubert & Joubert Ltd., Coates Patons (Aust.) Ltd., J. N. & C. K. Watt, Metal Manufacturers Ltd., Mr. Fred Param, Mrs. J. Irvine, Mr. A. Garraan, Union Insurance Society of Canton Ltd., Visy Board Co. Pty. Ltd., Alfred Stewart Pty. Ltd., Ozapaper Ltd., MacRobertson Pty. Ltd., Croft Bank Dairies Ltd., Australian Federation of Air Pilots, Cyclone Co. of Aust. Ltd., Mrs. T. McKellar, Mrs. J. B. Arnold, Dr. Mildred Green, Mrs. Margery C. Baker, Briscoe Ltd., Mr. F. H. Perry, Mr. W. J. Falconer, Georgian House, Pty. Ltd., Commonwealth Industrial Gases Ltd., Mr. J. T. Campbell, Mrs. W. T. Long, Mrs. E. Raynor, Mrs. F. E. Cranage, The Bowater Corporation of Aust. Pty. Ltd., Mr. J. A. Kelson, Mrs. A. Sayers, Dr. G. D. Wilkins, Miss Betty Upfield, Mr. J. P. Beveridge, Kempthorne Pty. Ltd., Dr. Rosemary Williams, Dr. W. A. St. Clair, Mr. R. J. Ashton, Dr. J. Graydon, Nicholas Pty. Ltd., A. F. Kent & Sons Pty. Ltd., Mr. J. A. Magnussen, Dr. G. H. Oldfield, Maize Products Pty. Ltd., Miss A. A. Bill, Permax Molins Pty. Ltd., Carba Dry Ice (Aust.) Pty. Ltd., State School, Warrarong, Dr. & Mrs. J. A. Smeal, Mr. H. M. Port, Sir Edmund & Dame Mary Herring, Miss D. B. Campbell, G. W. Green & Sons Pty. Ltd., Mrs. M. Sutherland, Artprint Publicity Pty. Ltd., Dr. Margaret Winter Ashton, E.H., Miss Sybil Irving.

£4.10.0 — Prahran Technical School.

£4.4.0 — H. F. Fox & Co.

£4.0.0 — Fawkner North State School.

£3.3.0 each — Mr. W. L. Osbourne, Mr. R. S. Prentice, Mr. H. Simpson, Moore, Miss M. E. Hunter, Hon. Hurley, L. Arthur Pty. Ltd., Ltd., Mr. L. R. Stillman, Ltd., Rotary Club of Nathalia Ltd., Arburckle Waddell Pty. Ltd., Pty. Ltd., Dr. G. R. A. Syme, Mr. K. A. Thomas, Rosella facturing Co. Ltd., Mrs. Irene Williams, Abercrombie & Beatt Stores Pty. Ltd., A. Gordon All Co. Pty. Ltd., Commander & Dr. Howard Praagst.

£3.0.0 each — Dr. J. W. C. Riddell, Dr. A. D. Maclean, High School.

£2.10.0 — High School Terang.

£2.2.0 each — Mr. G. L. Darling, M. mander & Mrs. G. A. Webb, Peacock Bros. Pty. Ltd., Relov Pty. Ltd., Mr. N. H. King, Mr. S. Chambers, Mr. B. R. E. Hall Co., Mrs. Frances K. Frost, M. Mrs. D. C. Nance, Dr. E. N. tising Pty. Ltd., Binder Hamli Woollen Mills Pty. Ltd., I. Plastalon, Wiggins Teape (Vic.) Swane, The Moorwitt Press, I. land Scott & Hislop, Dunca Parsons (Vic.) Pty. Ltd., I. American International Under Ltd., Apex Belting Pty. Ltd., National Cash Register Co. P. Nettlefold, R.V.B. Engineering Frank Selleck, Mrs. E. W. Moore, Dr. E. R. Killmier, J. Gippisland & Northern Co-operative change Assurance, Mr. J. C. Sharp Stephenson & Hare Pty. neil, H. R. Varley & Sons Pty. Mr. F. C. Preston, Mr. C. R. mons, Mrs. E. Gaze, Albright Ltd., Mr. J. A. Gill, Commar Webb, Holdensen Neilson Pres Lucy Bryce, Thos. Borthwick & J. P. Jones, Mr. L. L. Wathen Arthur Anderson & Co., Kir Neptune Oil Co. Pty. Ltd., M. & Co. Pty. Ltd., Associated I. Australian Diecasting Pty. Ltd. Ltd., Andrew Bros. Pty. Ltd. Pty. Ltd., B. L. Manufact Associated Crockery & Glassw Bedgood Shoes Ltd., J. P. A. Press Ltd., Mrs. M. J. Hand, M green Club, Balwyn.

£2.0.0 each — Miss M. Martin, Dr. N. (Aust.) Pty. Ltd., High School Supplies Co., Bostik Australia gere, Northfield Masonic Ladies

£1.2.0 — Mr. Nilson Ross.

£1.1.0 each — Mr. H. P. Pride, Ser Wallace Mitchell Pty. Ltd., Mrs. N. C. Webb, Dr. C. L. Featonby, McClures Pty. Ltd., J. V. C. de Cresigny, Mrs. T. Bank Officers Assn. Vic Branch, H. R. Black Pty. Ltd., Mr. W. Barnett & Co.

£1.0.0 each — Mrs. F. G. Kumm, J. E. E. E. The Leviathan, State S. Mrs. F. G. Dyson, O. W. P. D. C. McLean, Astra Hardware Mr. L. Basch, Paine's Biz Buz, H. Ball, Mrs. Florence Dyson.

Under £1.0.0 each — State School Munn B. D. Margensen, Mrs. I. S. Al Baptist Union Women's Group.

POSE AND FUNCTION OF THE OLD PEOPLE'S WELFARE COUNCIL

ple's Welfare Council is the
each State for information
all aspects of the care of the
ngs together in consultation
y organisations, statutory
vernment departments con-
e care of the elderly.

trature, pioneering work, ad-
s, conferences and other
ies out its aim—to study
ld people and to encourage
measures for their well-

Through local Old People's Welfare
Committees, representative of similar
organisations and bodies in each sizable
area of population, it promotes the welfare
of all the senior citizens in the State, with-
out regard to politics, creed or colour.

These widely-spread Old People's Wel-
fare Committees are affiliated with the
Old People's Welfare Council. Each of
these voluntary committees is actively en-
gaged, in association with municipal
authority, and helped by Government sub-
sidies, in promoting the welfare of the
elderly in its own district.

FORM OF BEQUEST

queath the sum of _____ to *THE OLD PEOPLE'S WEL-*
COUNCIL to be applied for such of the purposes of such Council as
think fit. *AND I DECLARE* that the receipt of the Treasurer or
proper officer of the said Council shall be a full discharge to my
s for the said bequest.

