



VICTORIAN COUNCIL ON THE AGEING

# *ANNUAL REPORT*

1966 — 1967

PEOPLE'S WELFARE COUNCIL OF VICTORIA



# OLD PEOPLE'S WELFARE COUNCIL OF VICTORIA

## *Members and Associate Members, 1966 - 1967*

### GOVERNMENT

(Nominees of the following State Government Authorities have been co-opted to the Executive Committee of the Council).

Health Department  
Hospitals & Charities Commission  
Mental Hygiene Authority.

### ORGANISATIONS AND ASSOCIATIONS

Australian Association of Social Workers (Vic. Branch).  
Australian Jewish Welfare & Relief Society  
Australian Medical Association (Vic. Branch).  
Australian Red Cross Society (Vic. Division).  
Brotherhood of St. Laurence.  
Business & Professional Men's Civic Association, Footscray.  
Catholic Women's Social Guild.  
Citizens' Welfare Service of Victoria.  
Combined Pensioners' Association.  
Congregational Women's Fellowship of Victoria.  
Country Women's Association of Victoria.  
Melbourne City Mission Inc.  
Melbourne Ladies' Welfare Society.  
Mental Health Auxiliaries of Victoria (Central Council).  
National Council of Women of Victoria.  
Over Fifties Association of Victoria.  
Returned Servicemen's League — Family Welfare Bureau.  
Rotary Club of Melbourne.  
Royal District Nursing Service.  
Soroptomist Club of Melbourne.  
Victorian Medical Women's Society.  
War Widows' & Widowed Mothers' Association.  
War Widows' Guild of Australia Ltd.  
Women's Central Organising Committee, A.L.P. (Vic. Branch).

### CHURCH AND OTHER ORGANISATIONS PROVIDING ACCOMMODATION FOR THE ELDERLY

Alexander Miller Memorial Homes.  
Ararat & District Elderly People's Home Society.  
Association for the Blind.  
Churches of Christ Department of Social Service.  
Church of England Homes for Elderly People.  
Catholic Housing Guild for the Elderly.  
Fairview Homes for the Aged, Warragul.  
Lotus Lodge Hostel for the Aged, Rosebud.  
"Mayflower" Home for Aged People.  
Melbourne Jewish Philanthropic Society and Montefiore Homes for the Aged.  
Methodist Department of Adult Care.  
Presbyterian Church of Victoria, Department of Social Services.  
Pro-Bus Housing Association.  
Royal Freemasons Homes of Victoria.  
Salvation Army.  
Victorian Baptist Aged People's Homes Management Committee.  
Villa Maria Society for the Blind.

### HOSPITALS AND INSTITUTIONS

After Care Hospital.  
Alexander, Castlemaine.  
Alfred Hospital.  
Bendigo Home & Hospital for the  
Mount Royal (Special Hospital for the  
Prince Henry's Hospital.  
Queen Elizabeth Home, Ballara.  
Richmond Dispensary & Outpatient  
Royal Melbourne Hospital.  
Dr. Singleton Dispensary & Welfare

### MUNICIPAL COUNCILS

City of Benalla.  
City of Frankston.  
City of South Melbourne.

### OLD PEOPLE'S WELFARE COMMITTEES

Alexandra & District Old People's Welfare Committee (A).  
Altona Elderly Citizens' Welfare Committee (A).  
Ararat & District Old People's Welfare Committee (A).  
Bendigo & District Old People's Welfare Committee (A).  
Berwick & District Senior Citizens' Welfare Committee (A).  
Box Hill Elderly Citizens' Welfare Committee (A).  
Bulla Shire Elderly Citizens' Welfare Committee (A).  
Canterbury Citizens' Welfare Committee (A).  
Castlemaine & District Old People's Welfare Committee (A).  
Charlton Old People's Welfare Committee (A).  
Coleraine & District Old People's Welfare Committee (A).  
Croydon & District Elderly Citizens' Welfare Committee (A).  
Dimboola & District Old People's Welfare Committee (A).  
Eastside Auxiliary for the Elderly.  
Shire of Eltham Old People's Welfare Committee (A).  
Euroa & District Old People's Welfare Committee (A).  
Frankston Elderly People's Welfare Committee (A).  
Shire of Maffra Old People's Welfare Committee (A).  
Malvern Elderly Citizens' Welfare Committee (A).  
Maryborough Old People's Welfare Committee (A).  
City of Moorabbin Old People's Welfare Committee (A).  
North and West Melbourne Old People's Welfare Committee (A).  
Red Cliffs Senior Citizens' Welfare Committee (A).  
Seymour Senior Citizens' Welfare Committee (A).  
Shepparton Senior Citizens' Welfare Committee (A).  
Stawell & District Old People's Welfare Committee (A).  
Swan Hill & District Senior Citizens' Welfare Committee (A).  
Terang & District Old People's Welfare Committee (A).

# PEOPLE'S WELFARE COUNCIL OF VICTORIA

Member Council, National Old People's Welfare Council of Australia)

## ns, Office-Bearers and Executive Committee, 1966 - 1967

### Patrons:

His Excellency Major-General Sir ROHAN DELACOMBE,  
K.C.M.G., K.B.E., C.B., D.S.O., K.St.J.

Lady DELACOMBE

### Hon. Treasurer:

Mr. G. P. N. WATT, C.M.G., C.B.E.

### Hon. Secretary:

Mrs. W. H. DOBSON

PPINDALL, C.B.E.

ERIS, O.B.E., M.A.

ODENHAM, M.A.

ERSEN

tee: The Office-Bearers, with the following:—

GES  
ER

LAIG  
AST, C.B.E., M.C.E.

MIESON

S  
ELL

Mrs. A. H. MAIN

Mrs. R. L. MOLINE

Mr. L. F. NORTH

Dr. P. M. TEWSLEY, M.B.E.

Mrs. B. B. THOMAS

Mr. R. E. TURNER

Miss D. WATKINS

Miss B. YEOMAN

. WHITE, M.A.

### Social Worker:

Mrs. M. E. FISCHER, Dip.Soc.Stud.

### Crafts Instructor:

Mrs. R. McRAE

Y, B.A., Dip.Soc.Stud.

### Hon. Solicitor:

Lt. Col. S. A. F. POND, O.B.E., E.D.

VING, M.B.E.

MLEY, F.C.N.A.

### Hon. Auditors:

L. B. WALLACE & SON,

Chartered Accountants (Aust.)

: Fourth Floor, 252 Swanston Street, Melbourne, 3000. Phone 32-3561.

s page.

People's Welfare Committee.

Citizens' Welfare Committee.

District Elderly Citizens' Welfare

. Old People's Welfare Com-

ly Citizens' Welfare Committee.

NS' CLUBS

ly Citizens' Club.

erly Citizens' Club (A).

Citizens' Club.

erly Citizens' Club.

Elderly Citizens' Club (A).

citizens' Club.

Citizens' Club (A).

Balwyn.

Citizens' Rest Rooms (A).

Hampton Elderly Citizens' Club (A).

Hawthorn Over-60 Club.

Highett Elderly Citizens' Club.

House of Friendship, Footscray.

Hurstbridge Elderly Citizens' Club (A).

Kanyana Club, Colac.

Lorne Senior Citizens' Club.

Mordialloc Elderly Citizens' Club.

Prahran Citizens' & Pensioners' Welfare Associa-

tion.

K. G. Putt Elderly Citizens' Club, Bentleigh.

Research Senior Citizens' Club.

City of Ringwood Elderly Citizens' Club (A).

Sandringham Elderly Citizens' Club.

Shepparton Senior Citizens' Club.

Warringall Senior Citizens' Club, Heidelberg.

Wattle Elderly Citizens' Club, Ferntree Gully (A).

N. G. Wishart Elderly Citizens' Club, Moorabbin.

Note: (A) denotes Associate Member.

# SIXTEENTH ANNUAL REPORT

For the Year Ended 30th June, 1967

The Council is pleased to record a further year of progress in its aims to promote and assist the welfare and good of all old people in the State of Victoria. It appreciates the growth in numbers of voluntary workers engaged in a wide range of services designed to assist those who in old age are unable to cope with all their problems.

The focus of attention of many of those engaged in this sphere of community service has tended to be increasingly directed towards ways and means of enabling those who are able and willing to do so to continue to live in their own homes. The means to this end have included the provision of elderly citizens' clubs, meals on wheels services, home visiting, chiropody, and more recently the establishment of day hospitals.

The extent to which elderly citizens' clubs, for instance, contribute to this end may be gauged by the fact that there are now more than 200 such clubs in the State of Victoria alone. The Old People's Welfare Council has not only assisted many Municipal Councils and voluntary organisations in the setting up of elderly citizens' clubs, but has maintained, through the services of its two Clubs Consultants, valuable advice and support. In this way, elderly citizens' clubs throughout the State are helped to attain maximum effectiveness.

Meals on wheels services, most of which are associated with the operation of elderly citizens' clubs, are reaching a steadily growing number of those who are temporarily or permanently housebound or bedridden. In order to review the many aspects involved in the provision of this type of service and to benefit from the experience of personnel directly concerned, the Council decided to arrange a one-day Meals on Wheels Workshop, which will take place in July, 1967. Representatives from municipalities within the Melbourne metropolitan

area were invited to participate in the Workshop.

The publication of the Council's "Report of Services for Older People in Victoria" was forecast in the previous Report. The need for such a report was demonstrated by the wide range of questions which have been made and suggestions of appreciation received from those who are engaged in this community service.

With the object of providing a forum for informative information and of affording opportunities for discussion on the various needs and problems of older people, the Council has been greatly assisted by the publication of its quarterly meetings of the Council. So as to extend the range of subjects covered by the addresses given on these subjects on such occasions, the Council has published them when they have been available, and has distributed them widely. The range of subjects covered is referred to later in this Report.

In order to assist the many Municipal Councils and Welfare Committees associated with the Council to carry out effectively a wide range of activities for which they have accepted responsibility, a conference of representatives of a number of such committees was held and adjacent to the metropolitan area in May. The outcome of the conference was encouraging and further conferences are planned. An associate membership of the Council will include a large number of individuals who have been approved by the Executive Committee. It is planned to provide a firm link between the Council, in whatever form, or who may be engaged in the force of voluntary workers, and the welfare of the elderly in the State.

The Council notes, with interest, the approach made to the Government by the National



il of Australia, seeking an  
he provisions of the Aged  
Act so that it might include  
intenance subsidies for suit-  
ation for the frail and in-  
the Council received an as-  
the Minister for Social Ser-  
Sinclair) that this matter  
idered in connection with  
dget, and is gratified that  
amending Act has done  
the church and other or-  
rich conduct homes for the  
t the needs of those who  
ble of independent living  
g-term care.

again gratefully records the  
h its activities have been  
receipt of a share of the  
grant to the National Old  
re Council of Australia,  
amounted to \$10,500. This  
sponding responsibility for  
support on as wide a scale  
as will be seen from the  
ort, the number of such  
highly gratifying. It is  
int out, however, that the  
ure by the Council still  
me received. This situation  
eful attention by the Fi-  
mittee, and is referred to  
in the Financial Report.

sphere, the Premier (Sir  
cluded in his policy speech

prior to the last elections, reference to an  
intention to make available to families pre-  
pared to look after their elderly parents,  
through the Housing Commission, mobile  
rooms at a low rental. The Council has  
since been informed by the Minister for  
Housing (Hon. E. R. Meagher) that a  
variety of plans for the proposed rooms  
are being examined. Representations have  
been made to the Minister by the Council  
as to the desirability of adequate super-  
vision at high-rise flats occupied by elderly  
women. These are now being considered.

The Council welcomes the continued in-  
terest being shown by the Rotary Club of  
Melbourne in the needs and problems of  
older residents in the City of Melbourne.  
The Welfare of the Elderly Committee of  
the Rotary Club, has enlisted the aid of  
this Council in examining a pilot study of  
aged persons in the Melbourne City Council  
area. This study was conducted by the  
Social Studies Department, University of  
Melbourne, at the instigation of Rotary  
with a view to determining appropriate  
future action.

The Council's activities in many direc-  
tions are referred to under appropriate  
headings in subsequent pages. On the head-  
quarters staff, Miss S. F. Ramsay has been  
confirmed in her appointment as Assistant  
Director.

G. T. CHIPPINDALL,  
Chairman.



East Home for Aged People, Gascoyne Street, Canterbury, provides accommodation in self-  
catering rooms with meals, and single rooms with meals, together with an associated hospital.

## INFORMATION AND ADVISORY SERVICE

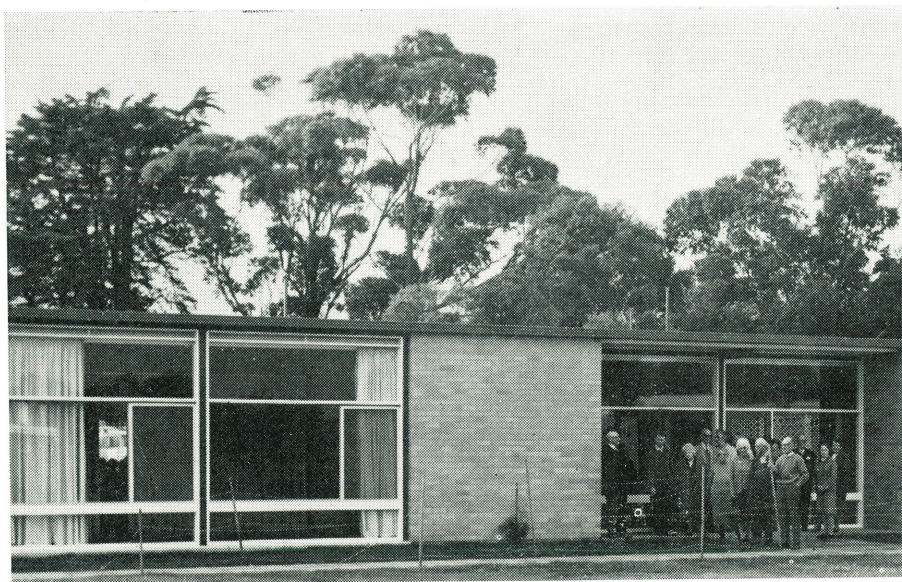
The service is steadily becoming more widely known and used. This is attributable, at least in part, to the publication of the Council's Directory of Services for Older People in Victoria last year. The average number of enquiries is now over 90 per month with a maximum of 130 in May.

*Financing Retirement.* Changes in the application of the means test embodied in recent Commonwealth legislation have resulted in the receipt of many more enquiries regarding the age pension and financial planning for retirement in general. The complexity of the merged means test entails increasing reference to, or consultation with, the Department of Social Service.

*Health.* Problems of financing prolonged illness and costly appliances, such as hearing aids and dentures, highlight the inadequacy of community services in this field. It is of particularly grave concern to many older people who consult the In-

formation and Advisory Service. They are unable to ensure a means test for chronic illness or disability. Health insurance schemes do not cover for long-term hospitalization. Payments usually cease after 90 days in any one year, irrespective of the need, and even quite substantial payments rapidly dwindle when private insurance have to be met.

*Housing.* Housing for the aged remains a major problem. Much effort has gone into collecting information regarding private guest homes for older people, and now has information about public establishments. Many of them visited with the help and co-operation of social studies students and in hospitals and other aged care facilities. A study is planned regarding special legislation to cover housing catering mainly, or exclusively, for older people.



Beaumaris Senior Citizens' Club in its rural setting at the Beaumaris Memorial Commu-



# ELDERLY CITIZENS' CLUBS

now 216 Clubs in Victoria. Far clubs have started at As-  
ton Heads, Belmont-Highton,  
Clunes, Cohuna, Eagle-  
Kyabram, Macleod, Merbein,  
Mont Park, Panton Hill,  
Tatura, Trentham,  
Wycheproof. A development  
of interest during this year  
of clubs within the  
and Plenty Hospitals. Each  
weekly, has its own office-  
committee and decides its own

have been built at Ashburton,  
Bairambury, Croydon, Eltham,  
Flemington, Ocean Grove,  
and additions have been made  
at Moorabbin and Oak-

## Conferences

Conferences have been held in this

Preston on 24th October, 1966  
delegates from East Brunswick,  
Carlton, Essendon,  
Glenroy, Kensington-  
Preston, Reservoir, Sunbury.

Horsesham on 15th November,  
representatives came from Bir-  
rumbidgee, Dimboola, Edenhope, Hor-  
sham, Minyip, Murtoa, Nhill,  
Warracknabeal.

Ocean Grove on 7th March,  
representatives from Belmont-  
East Geelong, West Gee-  
long, Werribee, Whit-  
elsea.

Wangaratta on 27th April,  
delegates from Beechworth, Benalla,  
Geelong, Myrtleford, Tallan-  
tam, Wangaratta, Wodonga.

Bendigo on 24th May, 1967,  
delegates from Bendigo, Camp-  
bellfield, Charlton, Clunes,

Donald, Dunolly, Eaglehawk, St. Arnaud,  
Seymour, Swan Hill, Wedderburn.

The aim of these conferences is—

- To give participating Clubs an opportunity of sharing the information and experience they have in relation to Club activities.
- To provide the opportunity of putting forward ideas for future activities.
- To help members to think of ways in which Clubs may be of service to the community.

The Council wishes to express sincere appreciation to the members of the "host" Clubs — Bendigo, Horsesham, Ocean Grove, Preston and Wangaratta — for allowing the use of their clubrooms and for providing a midday meal on these occasions. We are also extremely grateful to the discussion leaders, in most instances professional men and women, and to the specialists who have taken the general sessions.

## Students' Visits

At the request of the Department of Social Studies, University of Melbourne, arrangements were again made for 90 First Year Students to visit, in parties of 5, 18 Clubs on the same day.

## "Golden Years II"

The quarterly newsletter progresses largely owing to contributions made by clubs who are clearly helping each other through "News and Notes". This co-operation is very much appreciated, and also the help of those volunteers who come each quarter to assemble, staple and pack the newsletter.

## Visits

The 136 visits to clubs made by the Consultants have been of much interest and in many instances, of real inspiration.

## COUNCIL MEETINGS

The fifteenth Annual Meeting of the Council was held on Friday, 19th August, 1966, in the National Mutual Theatre. A large and representative gathering of members and invited guests was welcomed by the Chairman, Sir Giles Chippindall, who gave a summary of the work of the Council during the year under review. When declaring office-bearers and elected members of the Executive Committee as being duly elected for the coming year, Sir Giles referred appreciatively to the excellent service rendered to the Council by Mr. J. W. Jacobs, who had not offered himself for re-nomination in view of his approaching retirement. A warm welcome was extended to Dr. T. J. K. Jamieson on his election as a member of the Executive Committee.

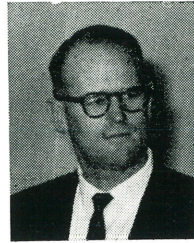


Hon. Ian Sinclair M.P.

The guest speaker was the Hon. Ian Sinclair, Minister for Social Services, who spoke on the subject of "Aging in Australia". He elaborated the proposed amendments to the Aged Persons Homes Act which had recently been announced, whereby eligible organisations would be able to provide more adequately for frail and infirm residents requiring almost constant nursing care. At the same time he emphasised the continuing contribution that older people could make to the community and the challenge which this provided for the Old People's Welfare Council to co-ordinate and promote community interest in this and other aspects of their welfare.

The general Council Meeting held in November was addressed by Mr. A. S. Colliver, B.A., Dip.Ed., Dip.Soc.Stud., Director, Presbyterian Department of Social Services, and by Mrs. E. McCallum, B.Com., Dip.Soc.Stud., Senior Social Worker, South Melbourne City Council. The topic under

review was—"Care of the frantically ill aged in relation to the Aged Persons Homes Act". The contrast



Mr. A. S. Colliver

by each of the speakers on this important subject was very different and the amount of information given was also different, making the audience particularly appreciative. At the Council meeting held in November the guest speaker was Dr. F. J. Medical Superintendent, Castlemaine, who spoke on "The function of the Day Care of the elderly". Following a number of those present were given the opportunity to ask questions which were answered by Dr. Green. In this aspect of this type of care was discussed in some detail.



Miss D. Watkins  
Geelong Advertiser  
Photo

The subject of the June meeting of the Council was the tent should be made and geriatric cater for the sick older people. The guest speaker on this occasion was Yeoman, Community Welfare Department, who spoke on the aspect of social services, while Miss D. Watkins, Officer, Hospitals and Community Welfare Commission, dealt with geriatric services again, by means of questions and answers on a wide range of information available to an interested person.

The Council gratefully acknowledges its indebtedness to the speakers who have contributed so generously from their knowledge and experience at these



## OLD PEOPLE'S WELFARE COMMITTEES

ning of 1967, figures showed 10 or so committees in existence. A proportion were active and had definite projects. Others were dormant but none-the-less were functional. Two committees had been dormant, while one committee has returned after a period in abeyance. The evening provides an opportunity for representatives to discuss responsibilities and activities in the light of experience, and the presence of representatives of the metropolitan area was welcomed. The returned Nurses Club on 1st October preceded by a buffet dinner. Representatives of 10 committees were present. S. Yarnold, President of the Malvern Old People's Welfare Committee, opened proceedings with a review of the situation in North & West

Melbourne, and was followed by Mr. N. L. Crofts, President of the Malvern Old People's Welfare Committee, presenting a review of the work in that area.

These talks revealed similarities and differences, according to local needs and problems mentioned, and were the main topics for discussion during the evening. There was not time to do much more than air some problems and difficulties and accordingly it was agreed that a further conference would be held in October.

Whenever practicable, staff members, when visiting country areas in particular, meet with representatives of committees to discuss local needs and the means by which committees are helping to meet them.

## COUNCIL SUB-COMMITTEES

*Meals Workshop Planning*: A small committee of consultation with staff members, plans for a one-day "Meals Workshop" to be held on Thursday, 1967. The aim of the committee is to provide an opportunity for representatives to discuss the aims and operation of the services from a number of viewpoints, including practical, financial and social viewpoints. The committee will allow full scope for discussion and, invitations on this occasion are limited chiefly to representatives of municipalities within the Metropolitan area.

*Funeral Cost and Benefits Advisory Committee*: This Committee has continued to concentrate on the question of possible hardship incurred in meeting funeral costs. In spite of a common belief in the community that such hardship is fairly widespread, the Committee has so far uncovered relatively little evidence of this. It is thought that a reluctance to disclose hardship on a sensitive matter such as this may be one contributing factor.

## COUNCIL LIBRARY

A large amount and variety of books have been borrowed from the library throughout the past year. The library is much in demand from organisations establishing housing schemes, but also from architectural students and the design of housing and facilities for older people.

Social Studies students and teacher-trainees have again made good use of the Library.

The Council is most grateful to its honorary librarian, Mrs. Herta Crohn, for her work in cataloguing new material, and for her advice and practical help in maintaining the Library.

## 60-PLUS EXHIBITION



Miss June Bronhill  
Age Photo

The third Exhibition of Hobbies and Crafts was held in the Malvern Town Hall from 6th to 9th September, 1966. The Exhibition was a success from its opening in such a delightful way by Miss June Bronhill, to its efficiently organised finish. The Council is immensely grateful to the members of the Committee who worked so tirelessly and well.

The quality and variety of the work was excellent, and a marked improvement on the 1964 display; great credit is due to all the exhibitors, particularly those who were handicapped in one way or another, and had the patience to do such exacting work so excellently. We were also delighted to see displays from Clubs which had only started within the last year, and to have some lovely work shown by individuals who heard about the "60 Plus" and asked to be a part of it.

---

## HANDCRAFT

The report of the Council's Handcraft Instructor shows an increasing interest in this activity, which is due to Mrs. McRae's skill and her sustained enthusiasm, imagination and perception. It is evident, from the expressions of appreciation received from so many elderly citizens' clubs, that this service is achieving its purpose in providing an outlet for the creative urge and in giving the satisfaction of accomplishment to large numbers of older people.

During the first quarter of the year there was intense activity in Clubs preparing their best handcrafts for the 60 Plus Exhibition.

Demonstrations and instructions were given at twenty-eight Clubs. In addition, fortnightly demonstrations have been held in the Committee Room of the Council.

## PUBLICATIONS

The Old People's Welfare Victoria published and arranged distribution of its Annual Report for the year ended June, 1966. In a following, in booklet form, were published during the

"Care of the Frail and Aged in relation to the Homes Act".

Addresses by Mr. A. S. Dip.Ed., Dip.Soc.Stud., Librarian, Department of Social Services and by Mrs. E. McCauley, Dip.Soc.Stud., Senior Social Worker, South Melbourne City Council.

"Means Test".

A transcript of the A.L.P. programme "Forum" by P. Downing, by kind permission of the Australian Broadcasting Corporation.

"The Function of the Day Centre for the Aged".

An address by Dr. R. M. O'Sullivan, Superintendent, "Alexandria" Home, together with answers.

The publication in September of the Council's "Directory of Older People in Victoria" is mentioned elsewhere in this Report. The quarterly newsletter, "Golden Age", has reached a circulation of 1,000 and is of interest to a steadily increasing number of subscribers, particularly in elderly citizens' clubs.

---

Crafts taught have been:

Tea towels, embroidered bags, basket weaving, placemats, mocassins, fur toys, leather goods, ing, tea cosies and cushion covers, pictures, nylon on canvas, rug making, pin weaving, basketry, pottery.

Attendances at demonstrations given at club premises and at the Council's headquarters. This figure does not include the initial visits to clubs, where the present attended the talk and demonstration.



## RY OF SERVICES FOR PEOPLE IN VICTORIA

publication of the Directory  
1966, copies have been pur-  
wide variety of organisations  
people, including social wel-  
local service groups, doctors,  
architects.

ar interest has been the num-  
bought by older people them-  
relatives and friends, seeking  
individual requirements, par-  
sing needs.

e also been sought by many  
ns and business houses con-  
e welfare of employees near-  
t.

People's Welfare Council is  
the assistance given by a  
professional and service organi-  
y metropolitan, suburban and  
ess in publicizing the Direc-

## STUDENT PLACEMENT

Throughout a three-month period, from November 1966 to February 1967, a total of six Social Studies students from Melbourne University undertook fieldwork placements with the Council.

Two third-year and two second-year students participated in a study of private enterprise rest home accommodation for elderly people, and in so doing made a valuable contribution to the Council's information on this type of accommodation.

Initially, studies were made of private rest homes in four municipalities, and this involved both locating and visiting these homes. Later, contacts were made with a number of other municipalities for the purpose of locating rest homes in those areas.

The Council is most appreciative of the help given by municipal councils in supplying names and addresses of rest homes either registered with the local council, or known to the council.



s for ambulatory residents conducted by Catholic Housing Guild for the Elderly at Brenbeal Street, Balwyn.

## TREASURER'S REPORT

As was stated in the Treasurer's Report last year, the Old People's Welfare Council of Victoria has a responsibility to strengthen its organisation and to move towards a degree of financial self-sufficiency. That the enlistment of local support has been accomplished in substantial measure is indicated by the fact that donations to the Council's funds amounting to \$12,521 were received from more than 400 contributors. It will be seen, however, that the total amount of such donations is \$6,000 less than that of last year.

This is mainly due to the receipt in 1965-1966 of some special non-recurring items, for which no compensating amounts were received in the current year. Another significant factor is that, in a number of instances, contributors are giving only the same number of dollars as was previously given in pounds.

In the year under review, this Council received, as its share of the amount allocated by the National Council to State Councils from the Commonwealth Government grant, a sum of \$10,500. This allocation was made on the same basis as in the previous year. The Victorian State Government grant of \$2,000 and that from the Melbourne City Council of \$300 were also renewed.

The Council is encouraged by the continued confidence and support of its many contributors, but cannot help being concerned at the recurring deficits in its yearly operations. The balance from the special public appeal made in 1962 has now been absorbed and we must look to other sources of income to enable us to respond to the continuous State-wide demands on the Council's services.

The receipt this year of a bequest of \$1,000 and the anticipated receipt of at least two further bequests in the coming financial year has necessitated considera-

tion of the manner in which other items of a non-recurring nature should be presented in the Council's financial statements. It is obvious that to present our accounts in the manner that the actual income received in the year should be set against the expenditure of the year, and the resulting balance — debit or credit — of the year clearly shown.

With this end in view, the Council has now adopted a new system of financial statements, now been adopted of transactions during the year. The moneys received that are not included in the year of receipt to the Revenue Account under the heading of Equalisation account under the heading of Assets and Liabilities. The Council's Revenue Account now records only the income and expenditure attributable to the year of account only.

When the Council launched its public appeal in 1962, it expressed the hope that a further appeal of that nature might be made for about five years. This has been realised, but the Council has found it necessary to make another fund-raising effort before the end of the year.

Meanwhile, we look forward to the maintenance of their valued support by the present contributors, and to the securing of a significant extension of sources of revenue will be conditionally, the inclusion of the bequests by those who appreciate the important work in the community and greatly.

The Revenue Account and the Statement of Assets and Liabilities, which have been adopted by your Executive Committee and duly audited, are presented

G. H.  
H.



# OLD PEOPLE'S WELFARE COUNCIL OF VICTORIA

## REVENUE ACCOUNT — YEAR ENDED 30th JUNE, 1967

31st July, 1966	\$16,113	Salaries	\$23,506
Old People's Welfare Council of Victoria from Commonwealth		Contributions to Retiring Gratuity	293
Government Grant	10,500	Printing & Stationery	3,279
	2,000	Rent & Cleaning	3,623
Kimpton Estate	\$1,000	Light & Heating	217
Revenue Equalisation	1,000	Postages & Telephones	1,073
	—	Travelling Expenses	1,029
During the following Donations	13,716	General Expenses	1,848
—\$1,000		Capital Expenditure—	
State—\$1,000		Office Equipment	390
Union Estate—\$800		Deposit—E. S. & A. Bank	8,000
Foundation—\$500		Bank Balance 30th June, 1967	2,210
Settlement—\$400			
Council—\$300			
Union Fund—\$300			
	600		
	339		
Contributions—"Golden"			
	260		
(Elderly Citizens)	1,466		
	474		
	3,139		
	\$45,468		\$45,468

## STATEMENT OF ASSETS AND LIABILITIES AS AT 30th JUNE, 1967

<b>REALISATION ACCOUNT</b>		<b>FIXED ASSETS:</b>	
Kimpton's Estate	\$19,252	<b>FURNITURE &amp; FITTINGS 1/7/66</b>	\$550
	1,000	Add Additions	120
	20,252		670
Revenue Account	6,427	Less Depreciation	282
			\$388
		<b>OFFICE MACHINES 1/7/66</b>	411
		Add Additions	270
			681
		Less Depreciation	138
			543
		<b>MOTOR VEHICLES 1/7/66</b>	2,174
		Less Depreciation	490
			1,684
		<b>DEPOSITS—E. S. &amp; A. Bank</b>	8,000
		Other	1,000
			9,000
		<b>CASH AT BANK</b>	2,210
	\$13,825		\$13,825

### AUDITORS' REPORT

We have examined the Statement of Assets and Liabilities as at 30th June, 1967, including Revenue Account for the year ended 30th June, 1967, of the OLD PEOPLE'S COUNCIL OF VICTORIA. In our opinion they are properly drawn up in accordance with accounting principles, so as to give a true and fair view of the state of the Council's affairs as at 30th June, 1967, and of the results of the year which ended on that date.

L. B. WALLACE & SON,  
Chartered Accountants,  
Auditors.

## DONATIONS

\$2,000.00	Government of Victoria.	\$15.00	each—Heidelberg Girls' Secondary School.
\$1,000.00	each—E. A. Green Estate, Estate Mrs. M. A. A. Kimpton, Felton Bequest Committee.	\$14.00	A.P.M. (Head Office) Staff Charity.
\$800.00	Patrick Brennan Estate.	\$13.45	Birchip High School.
\$500.00	Ian Potter Foundation.	\$12.00	each—G. W. Green & Sons Pty. & Dame Mary Herring.
\$400.00	George B. Hutchings Settlement.	\$10.50	each—H. M. Greig, E. L. Heyman, Barson & Co., P. & O. Lines of Coles Stores, Taylor Ferguson & Co. Smith Pty. Ltd., B.P. Australia Ltd., Doveton High School, City of Happiness.
\$300.00	each—Melbourne City Council, Harvey Patterson Fund.	\$10.00	each—Morwell Technical School, Hampton State School, Croydon E. American International Underwriters, John Holland & Co. Pty. Ltd., G.U.D. Manufacturing Co. Pty. Ltd. (Aust.) Pty. Ltd., Visy Board Co. wealth Industrial Gases Ltd., Westing Works Pty. Ltd., A. J. Briggs, Richard Allen & Sons (1919) Pty. Corporation of Aust. Ltd., Joubert Molins Pty. Ltd., R. Wallace Mitchell, Adams Tractors Pty. Ltd., Moran & Cato, F. H. Perry, Thos. Aasia Ltd., Blackburn South High Domestic College, A. Gifford, F. Technical School, A. F. Kent & A. Bill, N. O'Hear, Handcraft Dr. J. Egan, Abercrombie & Beattie S. C. Orford, Paton Advertising Russell Burrows Pty. Ltd., Mrs. Darling, Mrs. H. M. Kilpatrick, H. Creswick, Dr. Yvonne Wilson, Brain, Dr. D. G. Rayment, Dr. Les Bros. Pty. Ltd., Northfield Mason Dr. K. Campbell, E. Drummond, Kennedy, Dr. A. D. & Mrs. M. U.S.P. Benson Pty. Ltd., Mercantile insurance Co. of Australia, Mrs. Women's Association of Victoria, I. Moore, J. R. Collier, G. W. Griffin Ltd., Mrs. C. Sutherland, Metropoly Pty. Ltd., H. L. Scourrah, F. M. Sayers, T. N. Stevens, Aust. Ltd., Dr. G. H. Oldfield, Mrs. E. Miss D. Campbell, Fred J. Cato & Mrs. J. A. Smeal, James Har N. Robertson, Miss S. Irving, Falconer, Dr. J. M. Davies, Dr. Luke, Mrs. J. B. Arnold, L. M. E. L. Abrahams, York Press Ltd., Mathewson, Beaumaris Senior Cl
\$215.00	G. P. N. Watt.		
\$200.00	each—Edward Wilson Estate, Estate late Mrs. A. M. White, Mobil Oil Aust. Ltd., Austral Standard Cables Pty. Ltd., J. Gadsden Aust. Ltd., North Broken Hill Ltd., William Angliss (Vic.) Charitable Fund, Dunlop Rubber Australia Ltd., Percy Baxter Charitable Trust, International Harvester Co. of Aust. Pty. Ltd., C. F. W. Taylor Estate, Miss Leslie M. Henderson.		
\$175.00	E. S. & A. Bank Staff Social Club.		
\$100.00	each—John R. MacPherson Fund, Australian Estates Ltd., Olympic Consolidated Industries Ltd., Electrolytic Zinc Co. of Aasia Ltd., McPhersons Ltd., Chamber of Manufactures Insurance Ltd., George Adams Estate, A.N.Z. Bank Ltd., General Motors Holdens Ltd., Werge Batters Perpetual Charitable Fund, W. D. & H. O. Wills (Aust.) Ltd., Malcolm Moore, A. C. Goode & Co., Titan Manufacturing Co. Pty. Ltd., Joe White Maltings Ltd., Anonymous.		
\$50.00	each—E. C. Dyason Charitable Trust, Royal Insurance Co. Ltd., N.K.S. (Holdings) Ltd., Kraft Foods Ltd., Carlton & United Breweries Ltd., Youngs Transport Agency, Messrs. Corr & Corr, Balm Paints Ltd., Commonwealth Banking Corporation, Williams the Shoeman Pty. Ltd., Harry Goodman, Mobile Industrial Equipment Ltd., Bank of New South Wales, Preston Motors Pty. Ltd., Sidney Cooke Ltd., J. H. Wilkinson Pty. Ltd., J. K. & E. R. Henderson Memorial Fund, Australian Consolidated Industries Ltd., A.M.P. Staff Charity Fund, Massey Ferguson (Aust.) Ltd., Richmond Technical School, N. O'Donohue, L. J. Brown, Mr. & Mrs. E. J. G. Wilson, R. J. McArthur, Mayne Nickless Ltd., McLaren & Co. Pty. Ltd., R. N. Lemon.		
\$42.00	each—Permewan Wright Ltd., Windsor Hotel Ltd.		
\$40.00	each—Broken Hill South Ltd., Bryant & May, Ramsay, Ware Publishing Pty. Ltd., Prestige Ltd., I.C.I.A.N.Z. Ltd., Mercantile Mutual Insurance Co. Ltd., G. W. Edgar, R. S. Prentice.		
\$30.00	each—Ashwood High School, Containers Ltd.		
\$25.00	each—Stewarts & Lloyds (Distributors) Pty. Ltd., Victorian Guild Furniture Manufacturers Ltd., National Bank of Australasia Ltd., J. Harvie Picken, S. Wynn & Co. Pty. Ltd., The Specialty Press Ltd., L. Glenn, Pelaco Ltd.	\$9.00	Murrayville Consolidated School.
\$21.00	each—Commercial Bank of Australia Ltd., Commercial Banking Co. of Sydney Ltd., Andersons Pty. Ltd., H. Halford Pty. Ltd., Metal Manufacturers Ltd., Scottish Insurance Corporation Ltd., G. F. Turnley, John D. Harris & Co., Sir Ronald East, Dr. & Mrs. F. G. Tuddenham.	\$8.00	each—Mayfield Centre, Sassafras Guild, Dr. J. Riddell, J. Nathan,
\$20.00	each—Ozpaper Ltd., Geo. M. Hume, Hugh Anderson Pty. Ltd., Commercial Union Assurance Co. of Aust. Ltd., Broons Containers Ltd., Mica & Insulating Supplies Co. Pty. Ltd., Smith Mitchell & Co. Ltd., R. Collic & Co. Pty. Ltd., British United Shoe Machinery Co. Pty. Ltd., Anonymous, Cumming Smith & Co. Ltd., Mt. Lyell Mining & Railway Co. Ltd., Timboun High School, South Melbourne Technical School, Presbyterian Ladies' College, Burwood, Horsham High School, Conzinc Riotinto of Australia Ltd., Meggett Ltd., J. McIlwraith Smith, E. F. Robertson, A. D. White, Dr. Barbara Wood, Shell Co. of Australia Ltd., Pyrox Ltd., R. T. Hawkins, Mrs. G. C. Hawker, Australian Carbon Black Pty. Ltd., Brashes Pty. Ltd., G. D. Brown, Rotary Club of Williamstown, Briscoes Ltd., Dr. Margaret McClelland, Caterpillar of Australia Ltd.	\$7.00	each—Covwarr State School, M. G. Syme, Dr. G. Rechelmann.
\$17.00	Blackburn East State School.	\$6.50	Alexander & Boehme.
		\$6.30	each—Duncan & Weller Pty. Ltd., R. J. Breen.
		\$6.00	each—Mrs. G. M. Webb, Hartwell of Friends, Mrs. S. Anderson, D. Faulkner, H. S. Rusden, C. L. nusson, Mrs. I. Jones, Staff of Ltd., A. G. Staley.
		\$5.84	Prahran Technical School.
		\$5.03	each—Clayton West State School, taurants Pty. Ltd., Laxettes Pty. Co. (Aust.) Pty. Ltd., Cerebos Pty. Ltd., F. G. Strang Pty. Ltd. Ltd., Arbuckle Waddell Pty. State School, Miss K. B. Cris School, Messrs. Russell, Kennedy Mackie, M. Shackell, V.I.A. Ltd., Redmond, H. R. Black Pty. Ltd., Ltd., C. N. Bergere, Dr. W. S. Sun